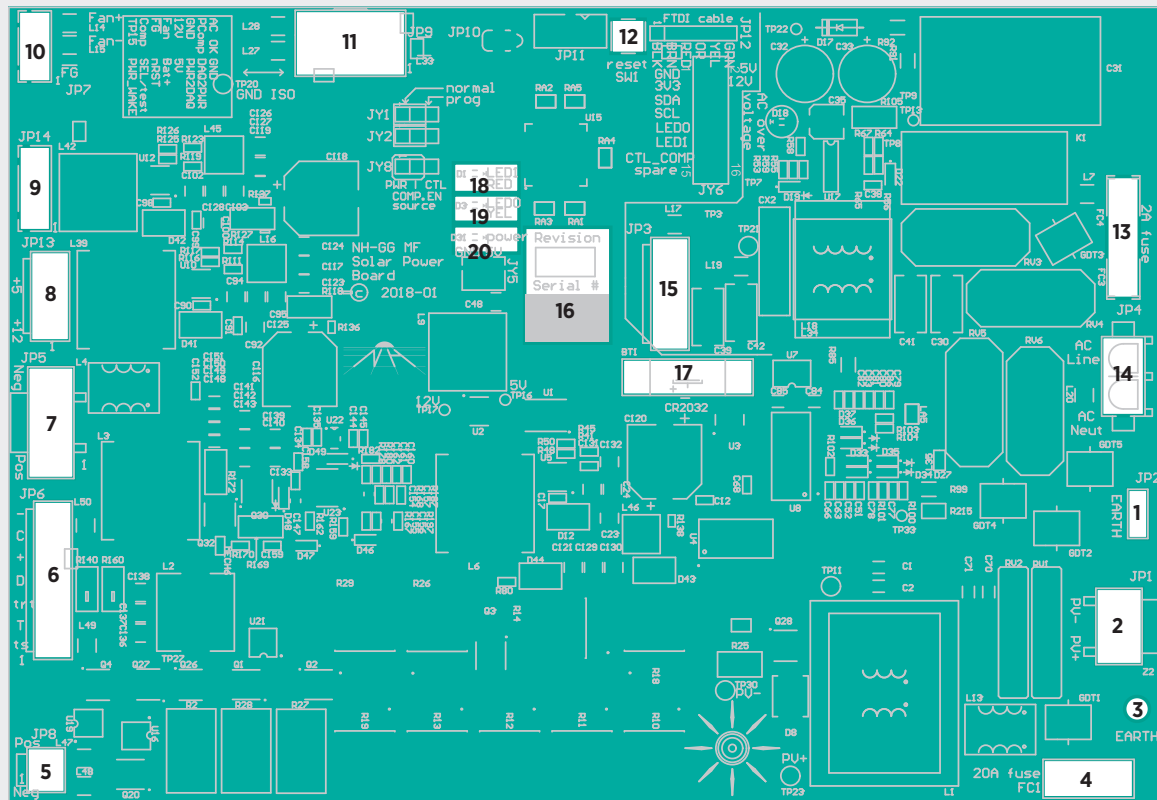


CFD-50 SDD POWER BOARD DIAGRAM

- 1 Earth connection, note that screw hole below is also earth.
- 2 Solar power input connector
- 3 Screw hole is also an earth connection
- 4 Solar input fuse (58V 20A)
- 5 From DC power supply connector
- 6 Compressor power connector
- 7 Energy harvesting aux output connector
- 8 Energy harvesting 5V/12V output connector
- 9 Energy harvesting data connector
- 10 Fan connector
- 11 Main board connector
- 12 Power board reset button
- 13 Mains input fuse (500VAC 2A)
- 14 Mains input power connector
- 15 To DC power supply connector
- 16 Board revision and serial numbers
- 17 Coin cell battery
- 18 Error LED (red)
- 19 Power heartbeat LED (yellow)
- 20 Input power indicator LED (green)



The main board is located beneath the display compartment above the storage chamber

